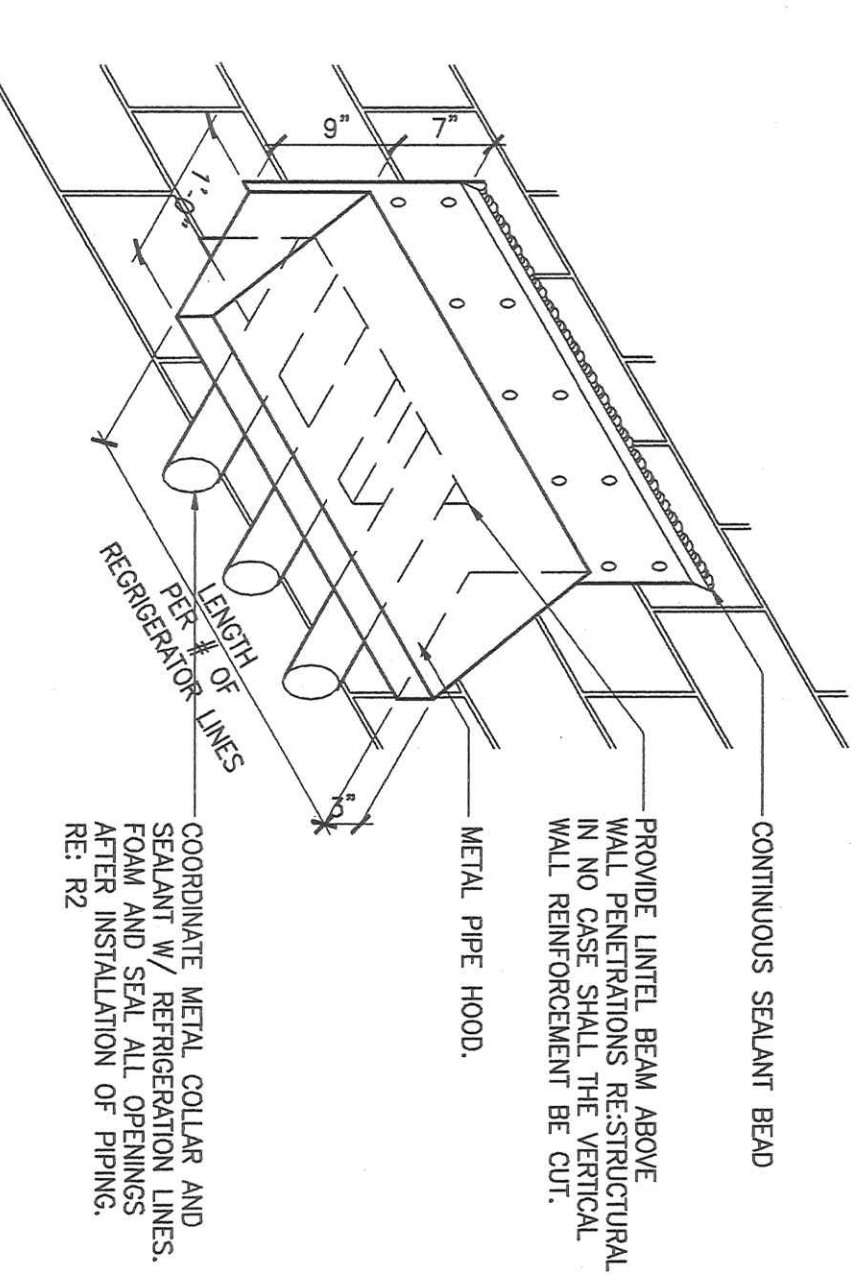
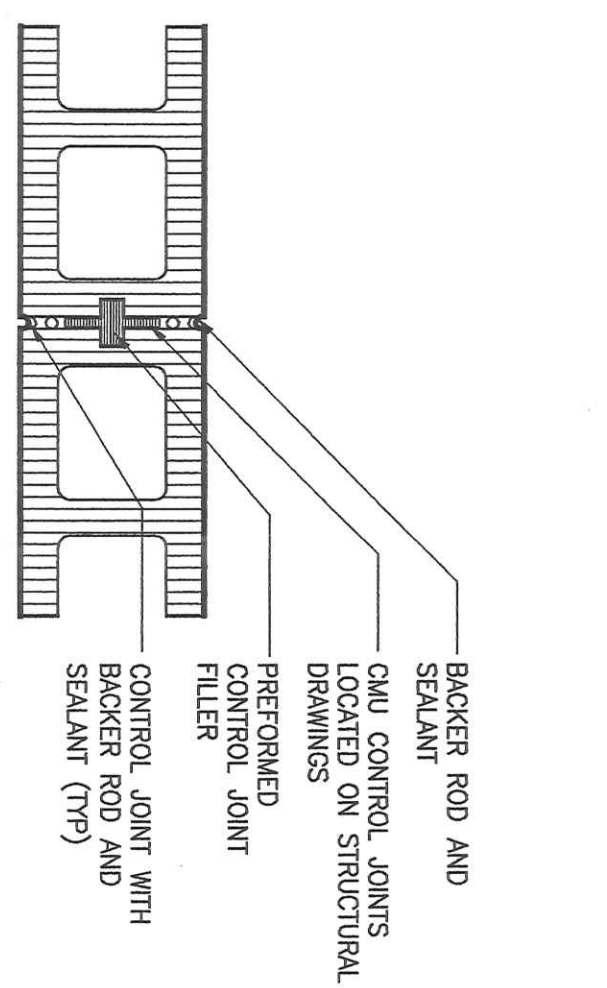


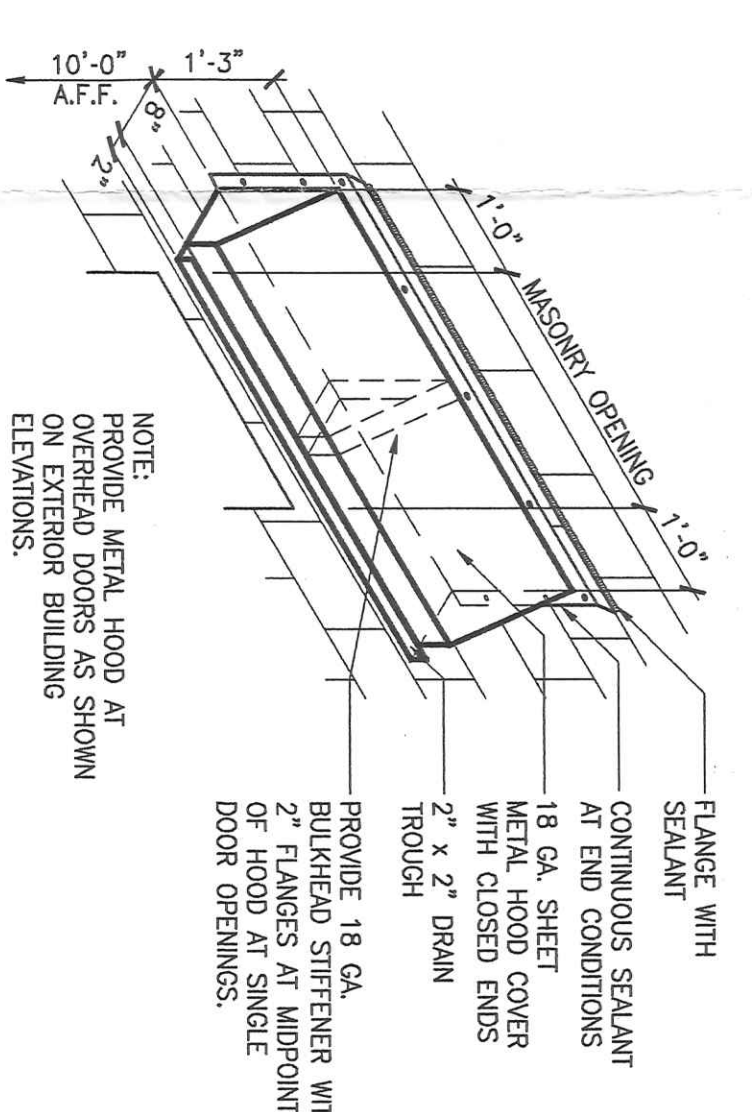
12 REFRIGERATION LINE LOCATION DETAIL
3/32" = 1'-0"



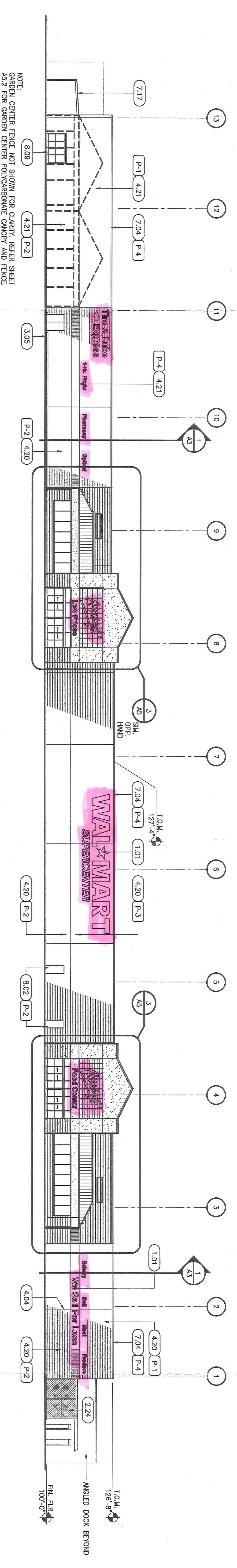
11 REFRIGERATION LINE HOOD DETAIL
3/4" = 1'-0"



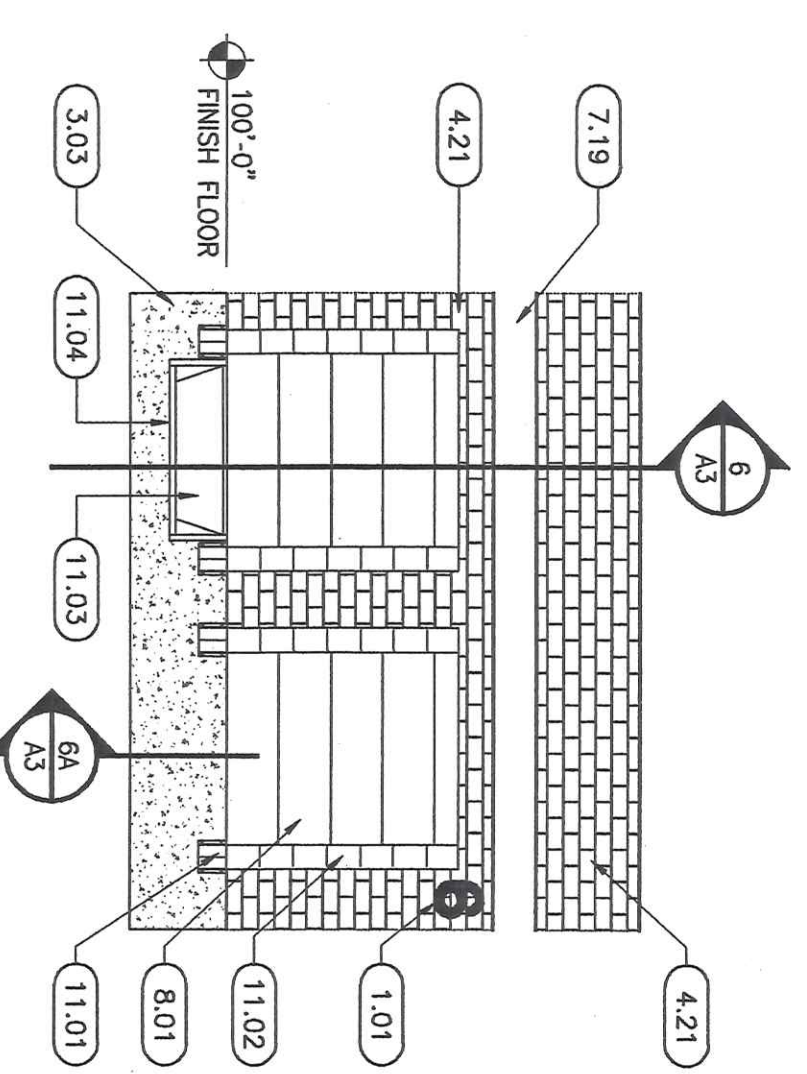
10 CMU CONTROL JOINT
1 1/2" = 1'-0"



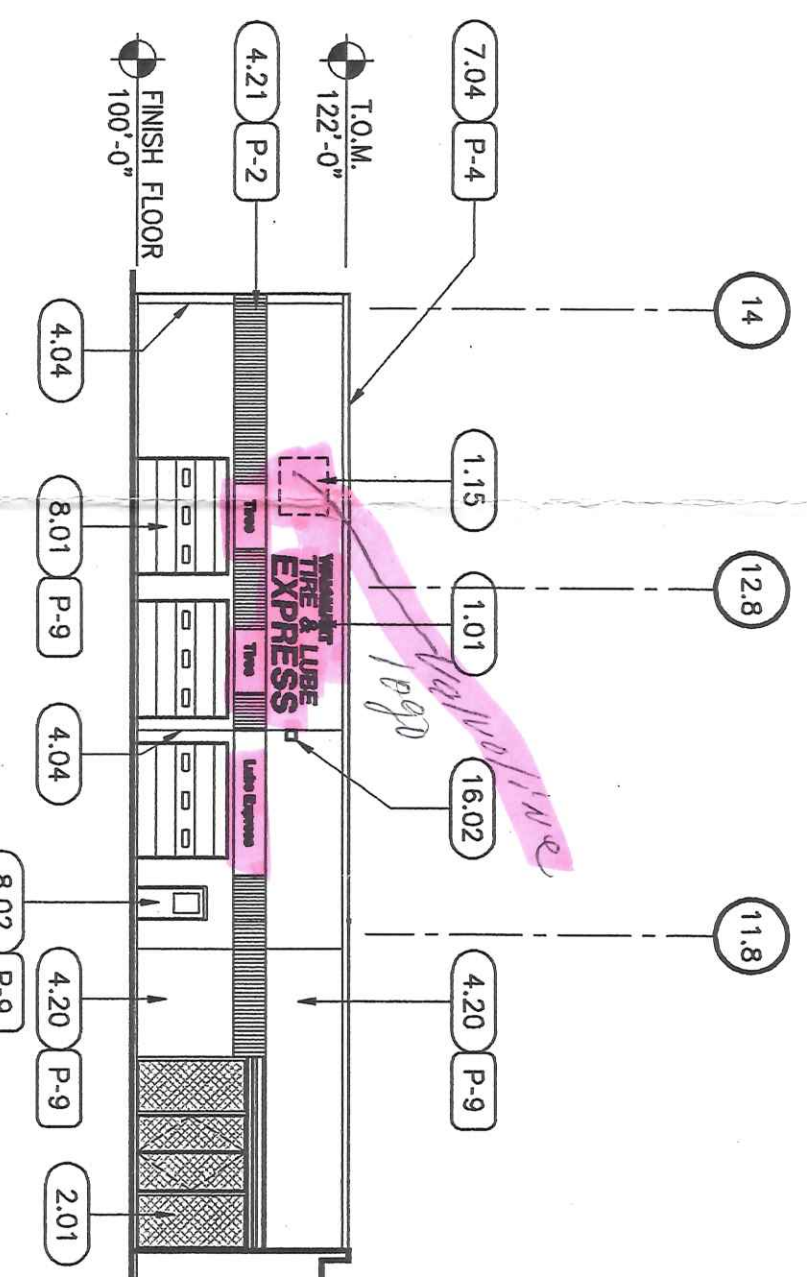
8 DOOR HOOD DETAIL
N.T.S.



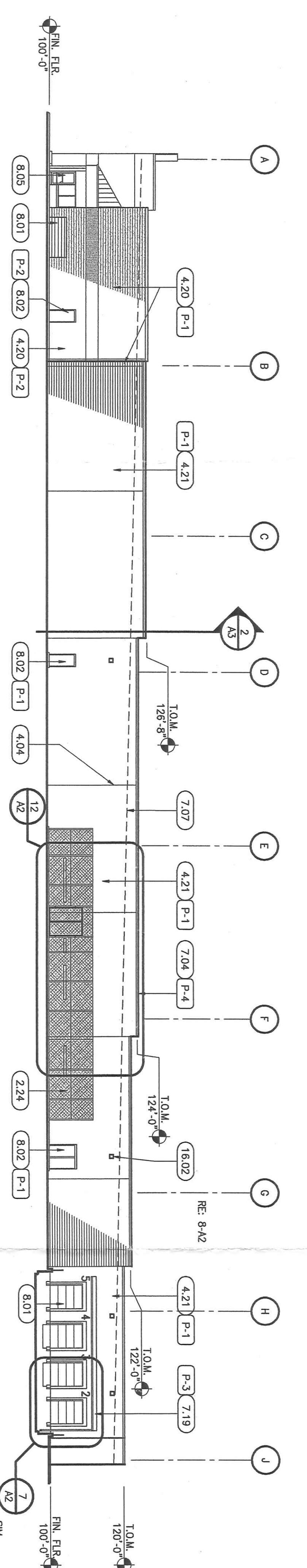
6 FRONT ELEVATION
1" = 20'-0"



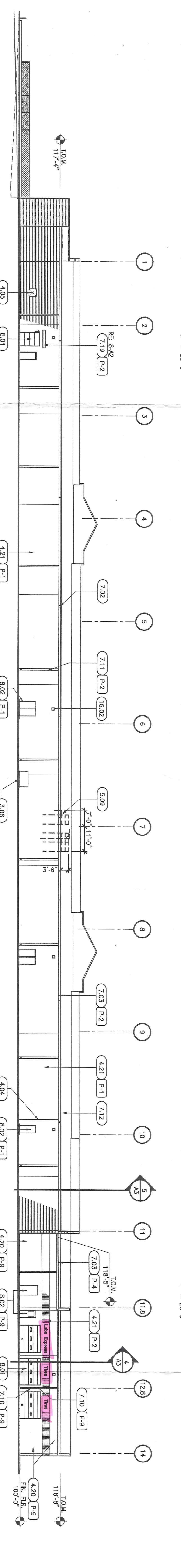
7 DOCK DOOR ELEVATION
1/8" = 1'-0"



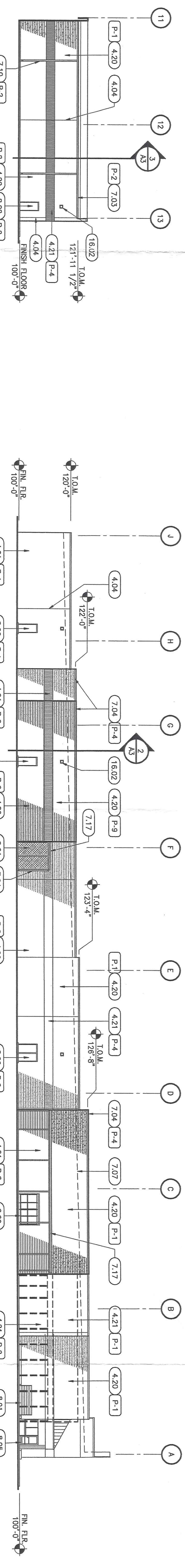
5 BUILDING ELEVATION
1" = 20'-0"



4 SIDE ELEVATION
1" = 20'-0"



3 REAR ELEVATION
1" = 20'-0"



1 SIDE ELEVATION
1" = 20'-0"

2 BUILDING ELEVATION
1" = 20'-0"

KENNOTES

- 1.01 STORAGE FURNISHED AND INSTALLED BY WAL-MART (01600).
- 2.01 11'-0" HIGH GAIN LINK FENCING WITH PLASTIC SCREENING SLATS INSTALLED VERTICALLY (02821).
- 2.24 12'-0" HIGH GAIN LINK FENCING WITH PLASTIC SCREENING SLATS INSTALLED VERTICALLY (02821).
- 3.03 FOUNDATION (03300).
- 3.05 8" X 8" CONCRETE CURB AT WALL (03300).
- 3.06 CONCRETE TRANSDOMER PIG, REFER TO LOCAL UTILITY (03300).
- 4.04 MASONRY CONTROL JOINT (S.J.), TYPICAL. REFER S1 FOR CONTROL JOINT LOCATION (04220).
- 4.05 40" X 40" MASONRY OPENING AT TRASH COMPACTOR, BOTTOM OF OPENING AT 48" A.F.F.
- 4.20 8" SPLIT FACE CMU (04220).
- 4.21 8" SMOOTH FACE CMU (04220).
- 5.09 116 FRAME HOLEST RAM AND GIBBS BALL ASSEMBLY, WAL-MART FURNISHED AND CONTRACTOR (05500).
- 7.02 METAL GUTTER EXPANSION JOINT (07711).
- 7.03 METAL GUTTER, PAINTED (07711).
- 7.04 METAL PARAPET COPING, PAINTED (07950).
- 7.07 ROOF LINE BEYOND.
- 7.10 5" X 5" METAL DOWNSPOUT, PAINTED (07711).
- 7.11 9" X 9" METAL DOWNSPOUT, PAINTED (07711).
- 7.12 ROOFING.
- 7.17 MANUFACTURED ROOF PANELS (07411).
- 7.19 SHEET METAL DOOR HOOD, PAINTED (07820).
- 7.24 4" X 4" METAL DOWNSPOUT, PAINTED (07711).
- 7.44 METAL FASCIA (09250).
- 8.01 HOLLOW METAL DOOR AND FRAME, PAINTED TYPICAL (08110).
- 8.05 ALUMINUM STOREFRONT (08411).
- 8.09 AUTOMATIC BI-PARTING ENTRANCE DOORS (08482).
- 11.01 DOCK BUMPERS (11160).
- 11.02 DOCK SEAL (11160).
- 11.04 DOCK LEVELER (11160).
- 11.04 STEEL ANGLE FRAME (11160).
- 16.02 LIGHT FIXTURE ABOVE DOORS AND AS INDICATED ON BUILDING ELEVATIONS. (16530).

COLOR SCHEDULE

- P-1 LIGHT GREY
 - P-2 DARK GREY
 - P-3 BLUE
 - P-4 RED
- RE: SPECIFICATIONS FOR ADDITIONAL INFORMATION (09000, 09500)

GENERAL NOTES

1. DIMENSIONS ARE INDICATED FOR SIZE, QUANTITY AND APPROXIMATE LOCATION ONLY. RE: S1 FOR DIMENSIONS AND LOCATIONS.

WALMART SUPERCENTER

BSW INTERNATIONAL
BRAD L. LECHTENDREYER
ARCHITECT OF RECORD

NO.	DATE	DESCRIPTION

NAPOLEON, OH 02261
 PROJECT NO. 145 1416
 STORE NUMBER: 03002228
 DRAWING NO. 04/17/09
 CHECKED BY: BSW

SHEET NUMBER **A2**

1815
Scot's St.